

# FOR YOUR DUMPLIN'

IT'S TIME TO TELL THAT BARISTA AT THE COFFEE SHOP HOW YOU REALLY FEEL...

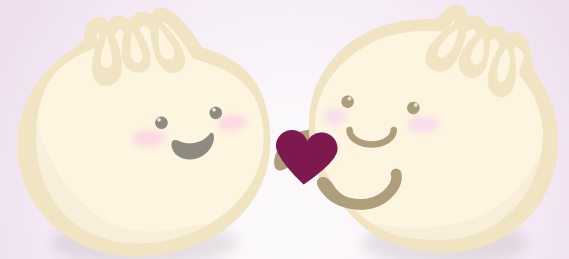
BEAN PASTE IS RED  
TUNA FIN IS BLUE



IF WE WENT TO DIM SUM  
YOU KNOW I'D CHOOSE YOU!



YOU ARE MY  
JOY SAUCE



HOW 'BAO BEING  
MY VALENTINE?



WASABAE?



BANH MI AND YOU



I LIKE YOU SO MATCHA  
CAN HARDLY STAND IT